

### Suite 103 - Atrium

This central, open two-story location will serve as a highly programmed gathering place and spill over for the food retail with music and performances, educational and community events plus limited use for private events. The atrium will have two adjacent meeting rooms available for public use.

### Suite 104 Four Eleven Kitchen

The energetic team behind the Four Eleven Shared Commercial Kitchen plans a food hub designed to empower, elevate, and establish a thriving food entrepreneur community, support our local food economy by providing an easy to work in space, welcoming diverse food concepts and entrepreneurs and creating direct access to fresh food produced locally.

### Suite 105 Packing and Distribution Center

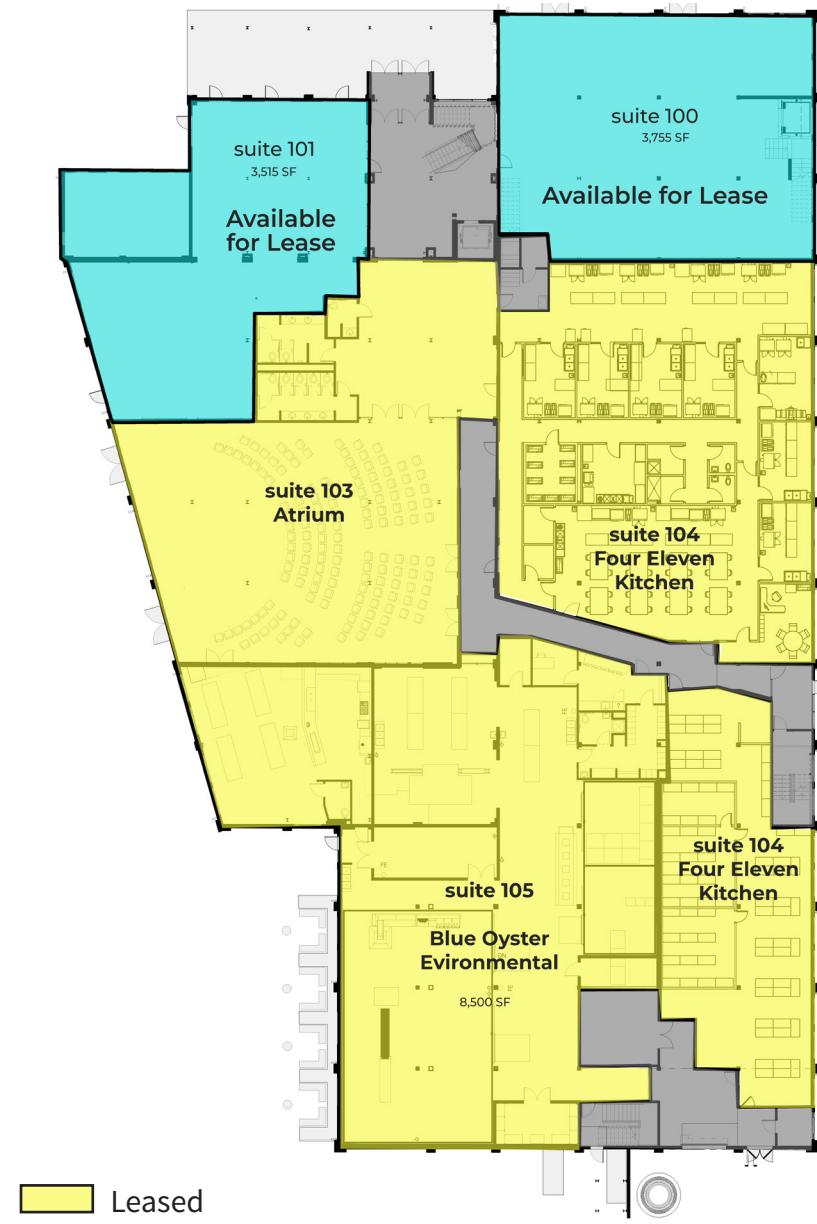
Blue Oyster Environmental, a prominent oyster company, is creating a new regional processing and packaging center to improve the capacity for at least 10 oyster farmers and others in the oyster industry. The new co-op will provide efficiencies for these small companies to clean, package, and market their oysters, and it will create a new distribution network for their goods to be sold to restaurants, grocery stores, farmers markets, and the like. Through a recently enacted nutrient trading initiative, the anchor tenant will also assist companies and municipalities in obtaining the necessary credits that offset nitrogen and phosphorous pollution in the Chesapeake Bay.

### Oyster Shop and Bar

As a compliment to the Packing and Distribution Center, the oyster bar and shop will offer fresh oysters for take-out or to enjoy on site as well as grilled oyster fare and local beverages.

## A breathtaking space

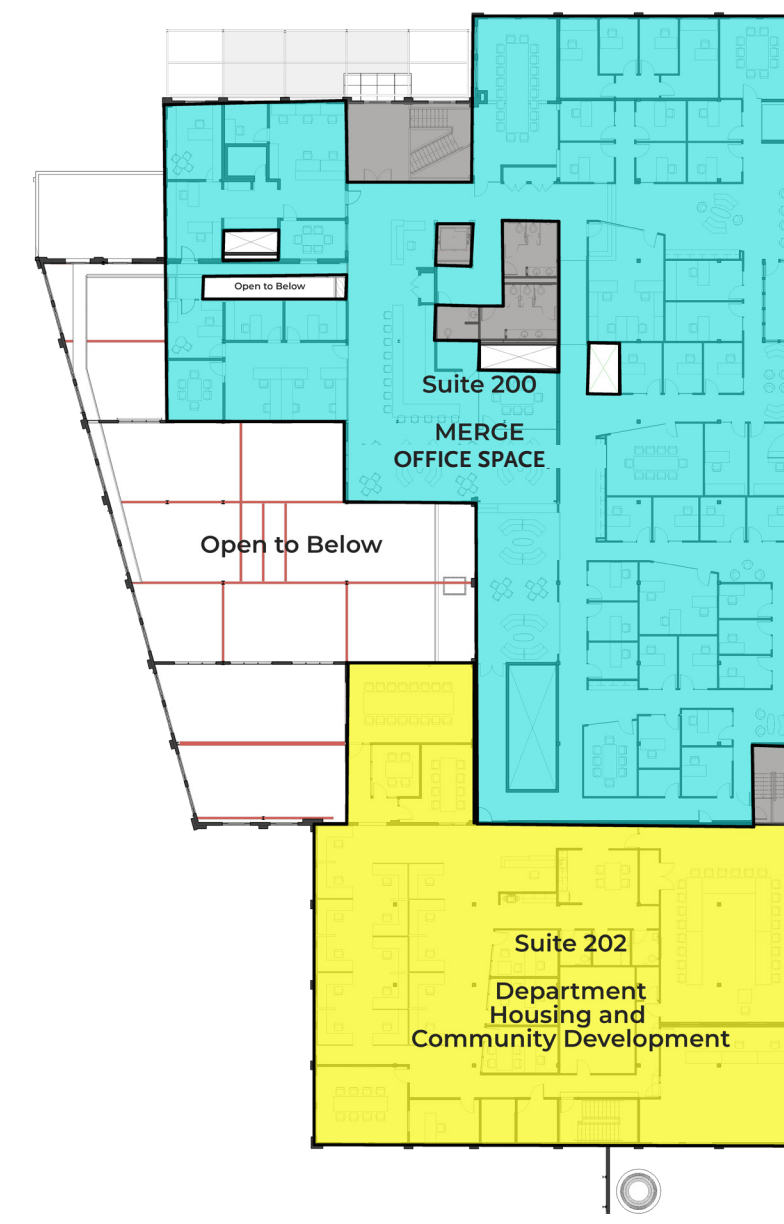
Easily accessible to downtown Cambridge, The Packing House is a prominent site that radiates with all the features today's mixed use communities offer while capturing the character of the area's past.



LEVEL ONE

### Building features include:

- Historic adaptive reuse of the existing Phillips Company F
- Class A office space
- Large windows
- Exposed brick
- Soaring ceilings
- Historic architectural features
- Open floor plans
- Unique conference and atrium event facility
- LEED Gold certification
- Onsite free parking
- Adjacent to Cannery Park



LEVEL TWO

*\*All square footage is approximate.*

### Suite 200 MERGE - Dynamic Office Space

**MERGE** is Cambridge's newest shared office space, featuring private offices and shared workspace for entrepreneurs, creators, and innovators, located at The Packing House. **MERGE** is an inspiring work environment, designed specifically with creators in mind and tailored to provide entrepreneurs what they need.

Choose from short- or long-term leases. All private office leases come with access to meeting rooms, high-speed internet, shared business center, and experienced on-site support. Take advantage of amenities including: shared kitchen and break room, networking and community events and more.

### Suite 202 Department of Housing and Community Development (MDHCD)

MDHCD's mission will be a focus on community engagement, facilitate lending to individuals and business, expand rural broadband access, resolve vacancies, and expand home ownership along Maryland's Eastern Shore.